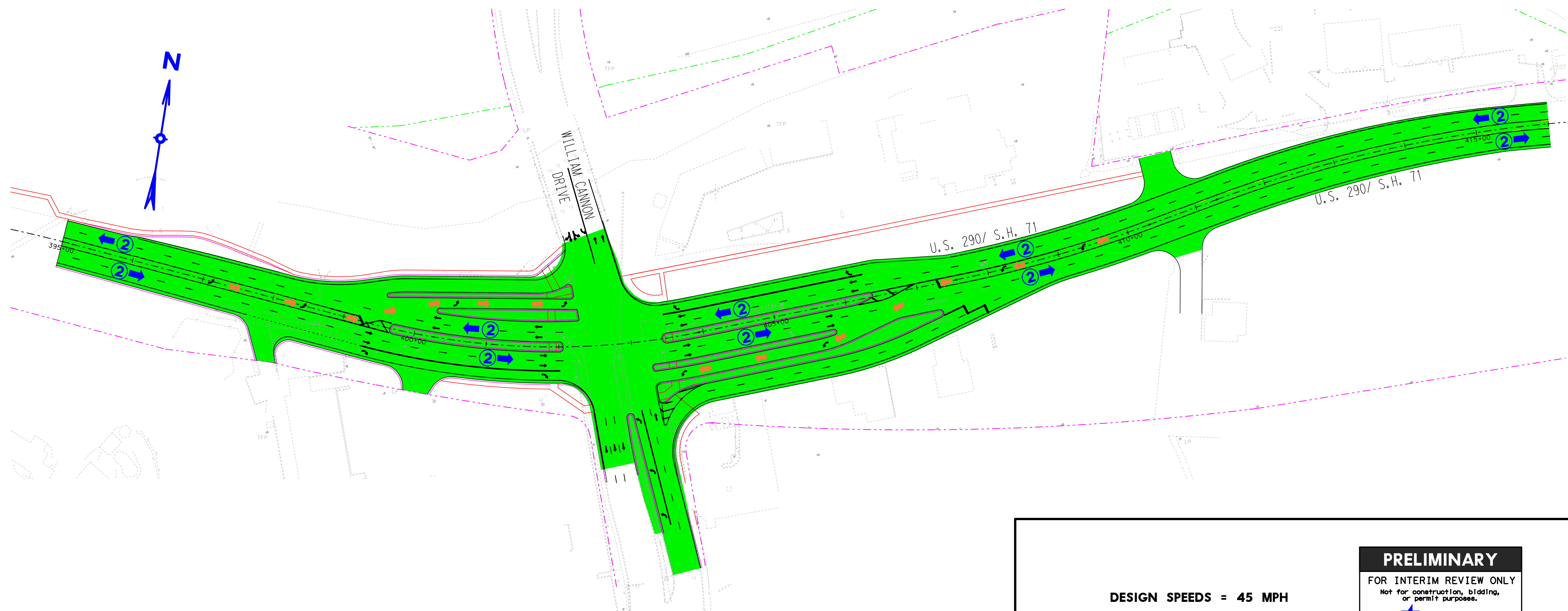
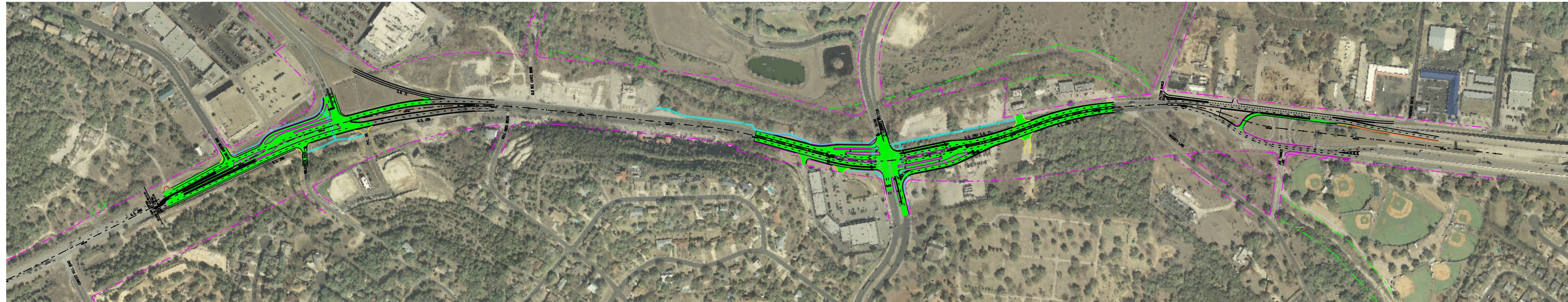
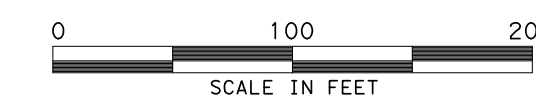


US290-CONTINUOUS FLOW INTERSECTION WILLIAM CANNON



**PRELIMINARY
SUBJECT TO CHANGE**

DESIGN SPEEDS = 45 MPH



PRELIMINARY
FOR INTERIM REVIEW ONLY
Not for construction, bidding,
or permit purposes.

Engineer: KEITH A. TAYLOR
P. E. No. 96639 Date 2/16/2012

**US 290 CONTINUOUS FLOW
INTERSECTION**